



TECHNOBOND®

UNDERFLOOR INSULATION PANELS

R1.6
MATERIAL R VALUE

TECHNOBOND COMPLIES WITH AS/NZS4859.1 FOR:

NET WEIGHT:

NOMINAL TOTAL AREA:

MEAN THICKNESS:

NOMINAL SIZE:

TECHNOBOND PANELS PER PACK:

APPROX. COVERAGE PER PACK:

DECLARED THERMAL RESISTANCE:

BATCH NUMBER:

INSTALLATION DATE:

INSTALLED BY:

CAUTION: Electrical cables and equipment partially or completely surrounded with bulk thermal insulation may overheat and fail. This applies to wiring installed prior to 1989.

READ THE INSTRUCTIONS ACCOMPANYING THIS PACK. REFER TO SAFETY ASPECTS ON REVERSE.

Allow 72 hours after installation to achieve nominal stabilised thickness and R-value. The performance of this product may be reduced if stored for too long in its compression packaging. The total R value depends on installation and may be greater or less than the R value of the product. The R value determined at 15 °C.

MANUFACTURED IN NEW ZEALAND BY TECHNOBOND, a division of Ellis Fibre Ltd, 152 KAIKORAI VALLEY RD, DUNEDIN. 0800 55 88 22 www.technobond.co.nz



TECHNOBOND®

UNDERFLOOR INSULATION PANELS

SAFETY INSTRUCTIONS

Technobond® insulation is non-toxic and safe to handle without protective clothing however we do recommend coveralls, face mask, goggles and adequate lighting when fitting under floor insulation. Before installation we recommend reading the Insulation Association of NZ Booklet on safe practice when installing polyester insulation by contacting: Site Safe at: www.sitesafe.org.nz

WARNING: Prior to installation, please check carefully for all hazards that may cause injury.

Beware of sharp objects like protruding nails and broken glass.

Check drainage pipes for leakage of water or sewage. Repair before installation.

ELECTRICAL HAZARD

Treat all electrical cables as live. Before you begin you must locate and identify all wires and cabling to reduce the risk of electrocution. Recommend marking the area where hazards exist with glow spray paint for future reference.

Wherever possible isolate power to this area before commencing work. Avoid covering and/or hiding electrical wires and cables. Where possible insulation should be installed above electrical wiring leaving all cables and wiring clearly visible.

Beware of damaged, exposed or hanging cables – contact a registered electrician to complete repair before starting installation.

CAUTION: Electric cables and equipment partially or completely surrounded with any bulk thermal insulation may overheat and fail. This applies to wiring installed prior to 1989.

How to install Technobond® Underfloor Insulation Panels; Read all our instructions before beginning installation.

We recommend all thermal insulation is installed in accordance with NZS 4246:2006 Energy Efficiency – Installing Insulation in Residential Buildings. Copies of this Standard are available from Standards New Zealand.

TOOLS REQUIRED:

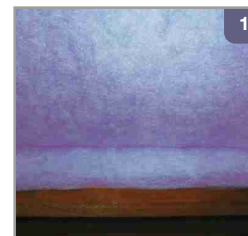
Knife and blades
Dust mask
Ventilation goggles

Staple gun
Staples
Multi LCD headlamp

Protective clothing
Tape measure
Glow spray paint.

FITTING INSTRUCTIONS:

Fit the long edge of the panel to the joist and then firmly fit the entire panel hard up under the floor (as shown in image 1).
Fold the excess overlap down so that the friction fit is complete. In fitting, specify a minimum of 25mm and maximum of 70mm for the excess overlap.



FITTING AROUND DOUBLE JOISTS:

Where a single joist becomes a double joist, cut a right angle and fit the Technobond panel.



FOR OPTIMUM PERFORMANCE:

There should be no air gaps between the edges of the firmly fitted panels and the floor joists to achieve optimum performance (as per image 2).

BRICK BUILDINGS OR BUILDINGS WITH VENTILATED CAVITIES IN WALLS:

Fit the Technobond panel to the last exterior floor joist. Avoid insulating over the ventilated cavity as this may undermine air flow and may result in excessive moisture in the wall.

CUTTING:

Cutting of the panels should be kept to a minimum using the specialist knife and blade. Blades should be changed regularly.

Do not cut Technobond panels against joists or bearers.

PIPES:

In the case of any future water leak, always maintain a 100mm gap between the Technobond panels, piping and other plumbing fittings. Should there need to be access to pipes this 100mm gap will allow adequate room.

MATERIALS:

- Pre-cut Technobond panels
All panels are 1.2m in length and supplied in 375mm, 435mm and 485mm widths.

SAFETY ASPECTS:

- Do not cut Technobond panels against joists or bearers.
- Do not staple or mechanically fix the Technobond panels.